

Combined Science
PAPER 4
Foundation Tier

Friday 7 June 2024 – Afternoon

Time: 1 hour 10 minutes

Diagram Booklet

THIS DIAGRAM BOOKLET MUST BE RETURNED WITH THE QUESTION PAPER AT THE END OF THE EXAMINATION.

In the boxes below, write your name, centre number and candidate number.

Surname					
Other names					
Centre Number					
Candidate Number					

INSTRUCTIONS

There may be spare copies of some diagrams in case you need them.

CONTENTS

Page

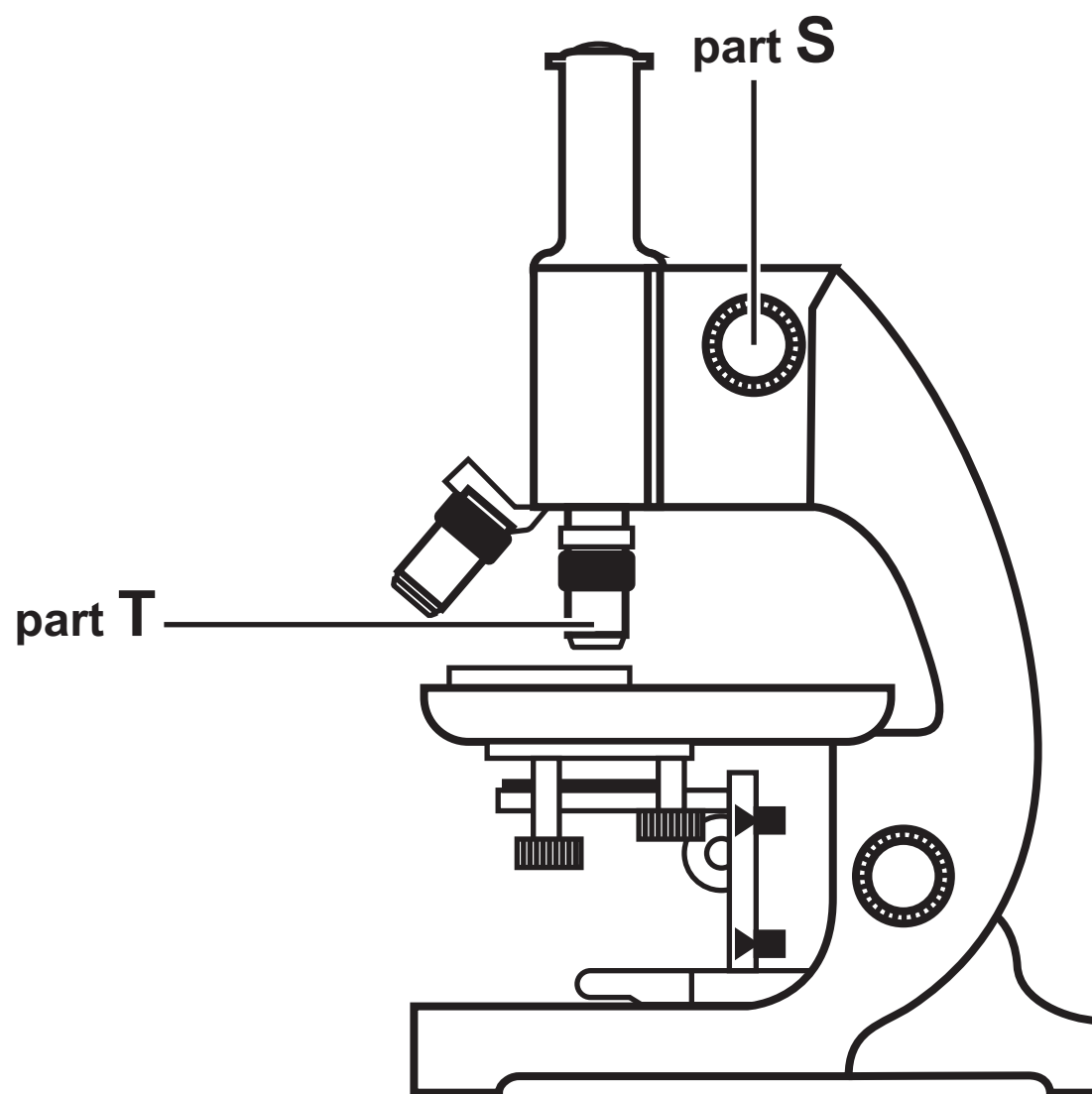
3	Question 1
4	Question 1(a)
5	Question 1(b)
6	Question 2(c)
7	Question 3(a)
8	Question 3(d)
9	Question 4
10	Question 4(d)
11	Question 5(b)
12	Question 6(a)
13	Question 6(b)
14	Question 6(c)

Spare Copies

15	Question 1(a)
16	Question 3(a)

Question 1

FIGURE 1



Question 1(a)

part of microscope

function

part S ●

● to stain the cells

● to focus the image so that it is clear

● to magnify the image

part T ●

● to hold the slide in place

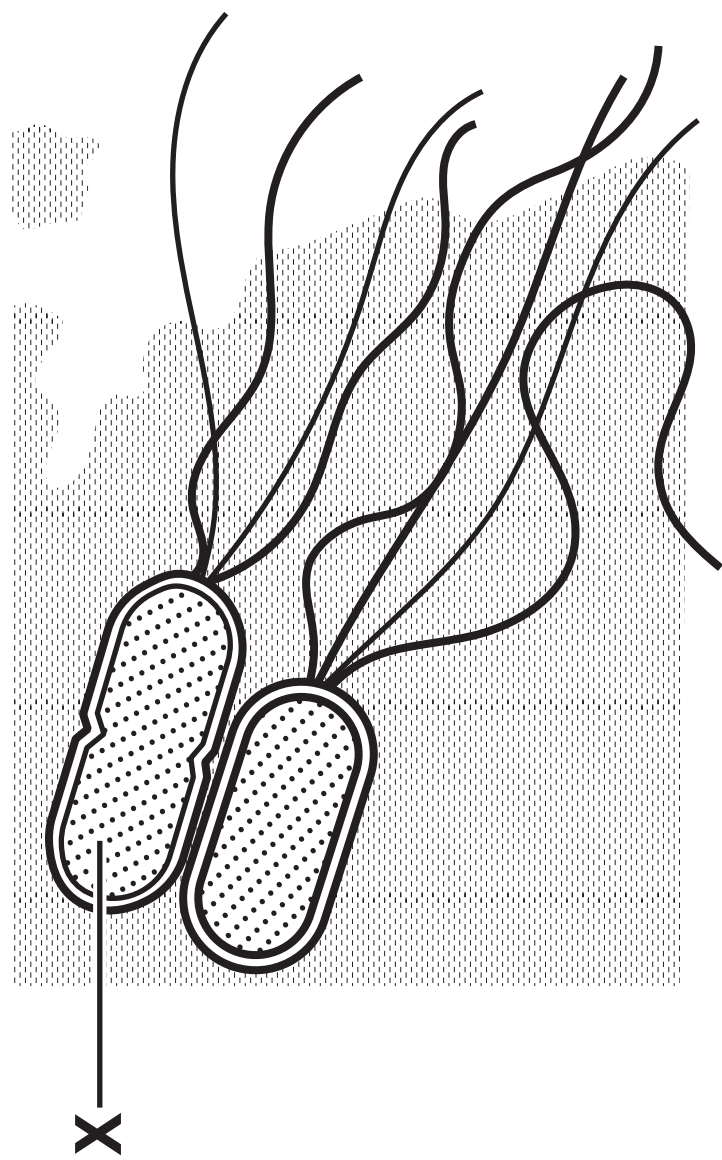
● to provide light to see the image

FIGURE 2

image A

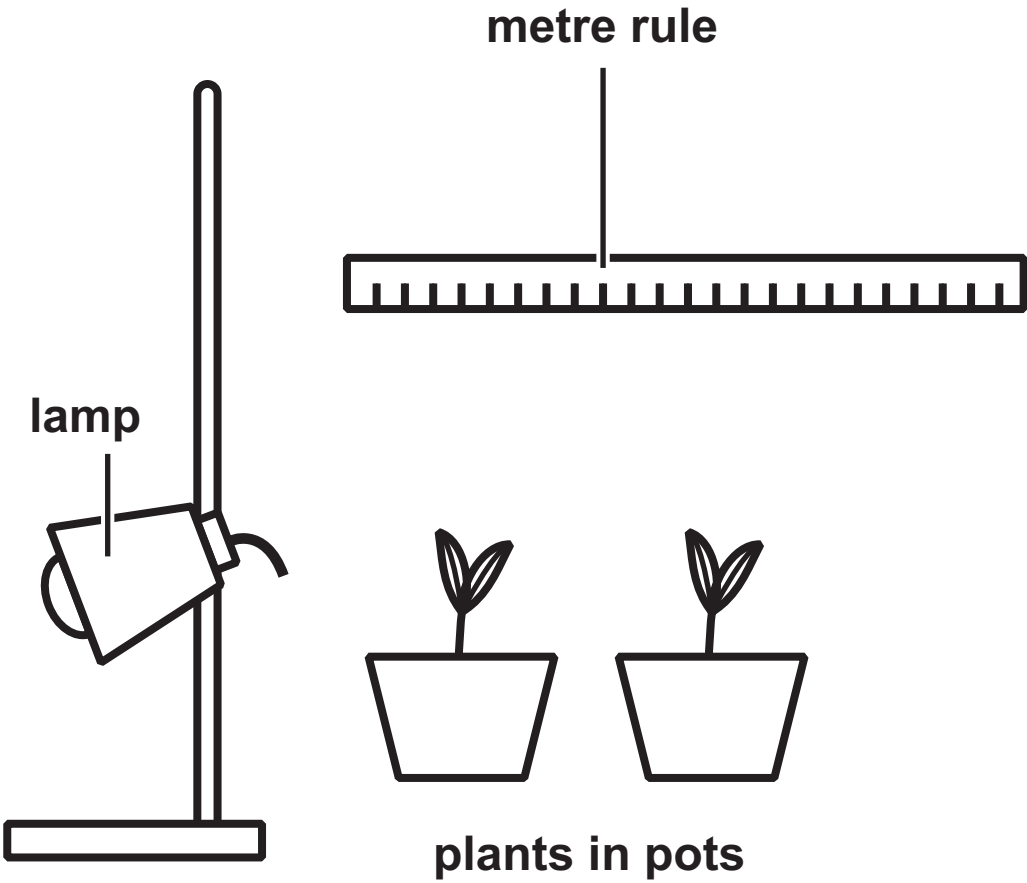


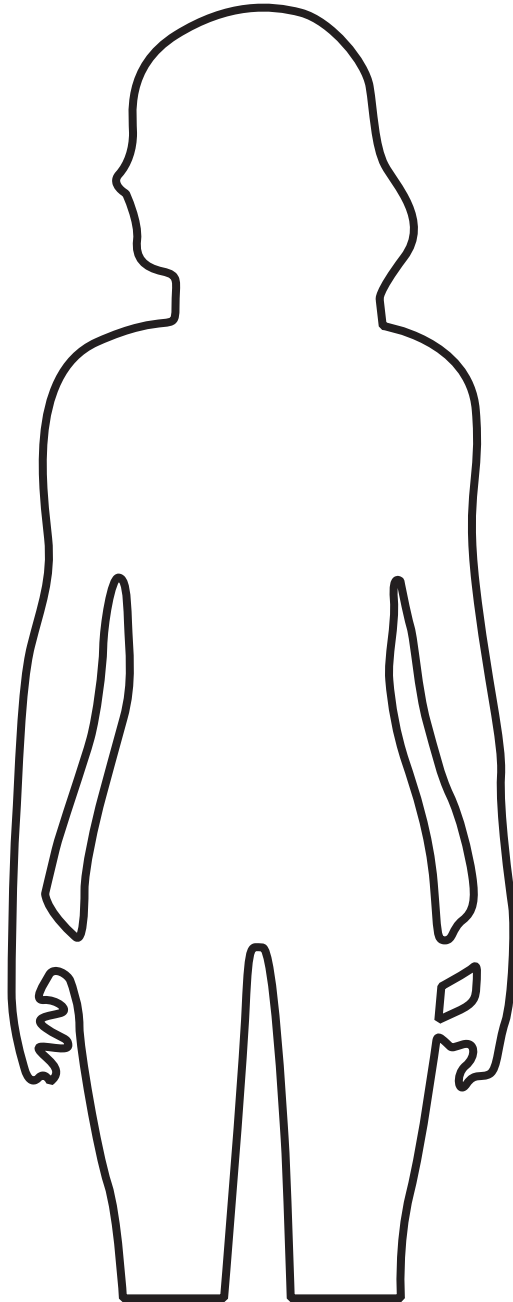
image B



Question 2(c)

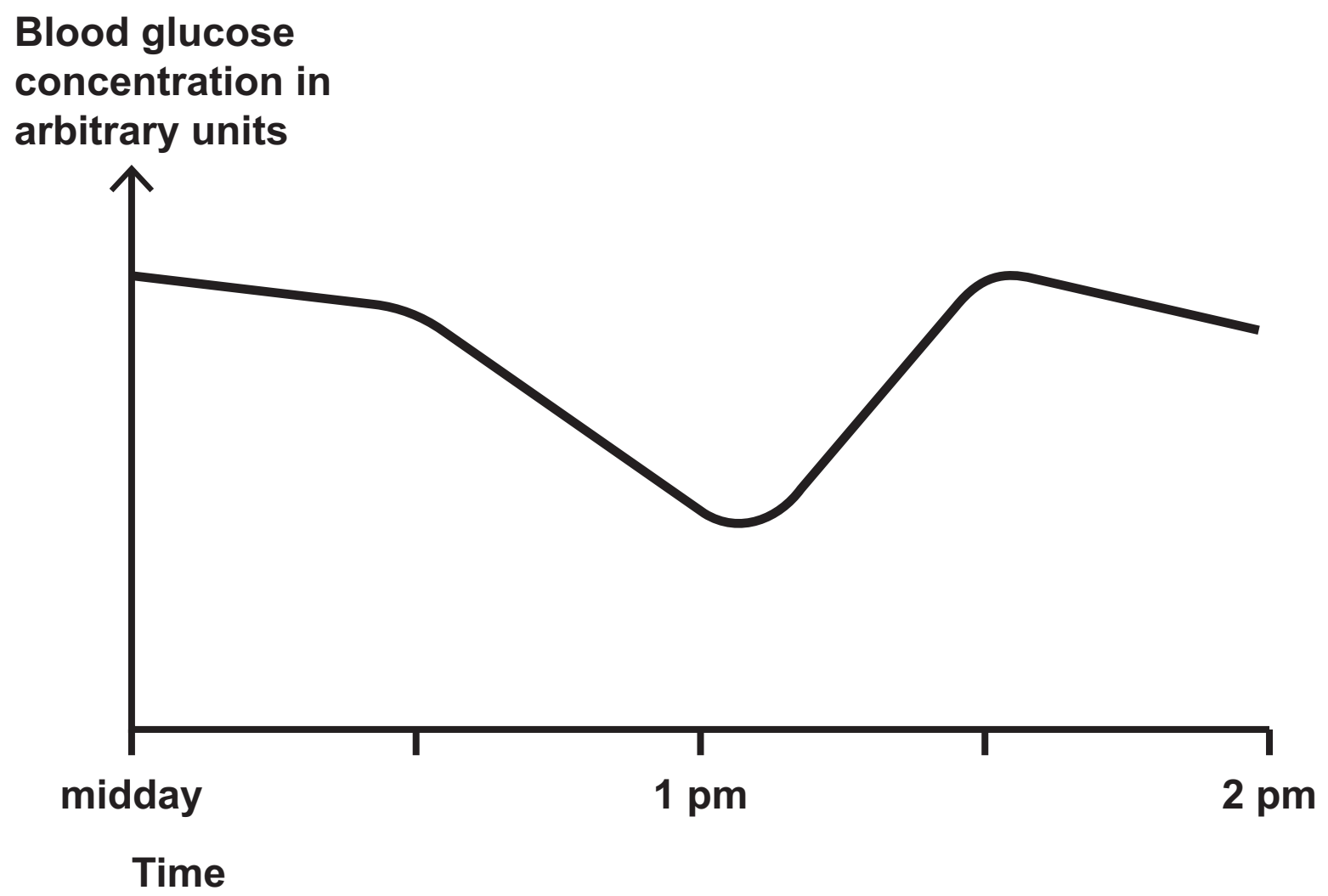
FIGURE 3



Question 3(a)**FIGURE 4**

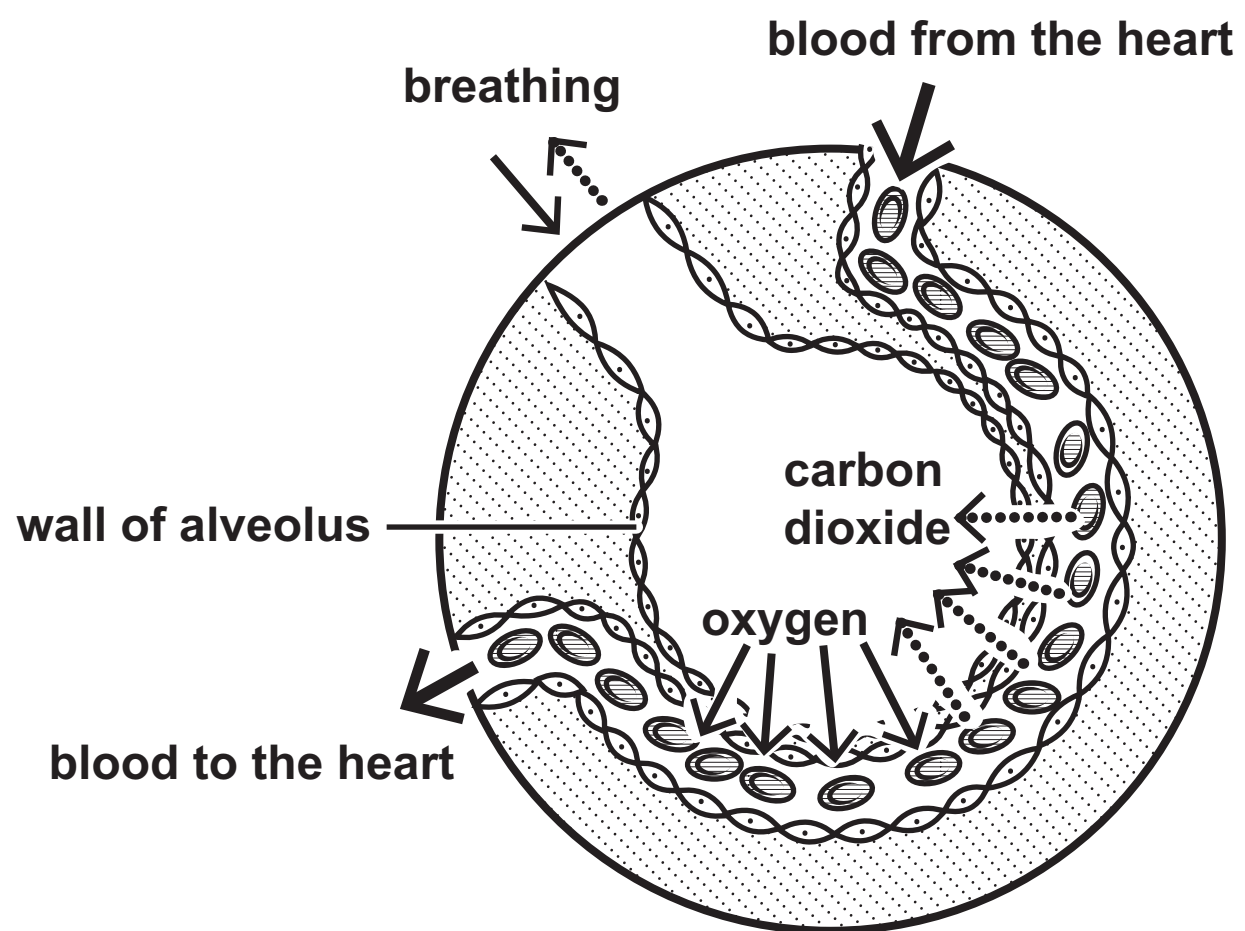
Question 3(d)

FIGURE 5



Question 4

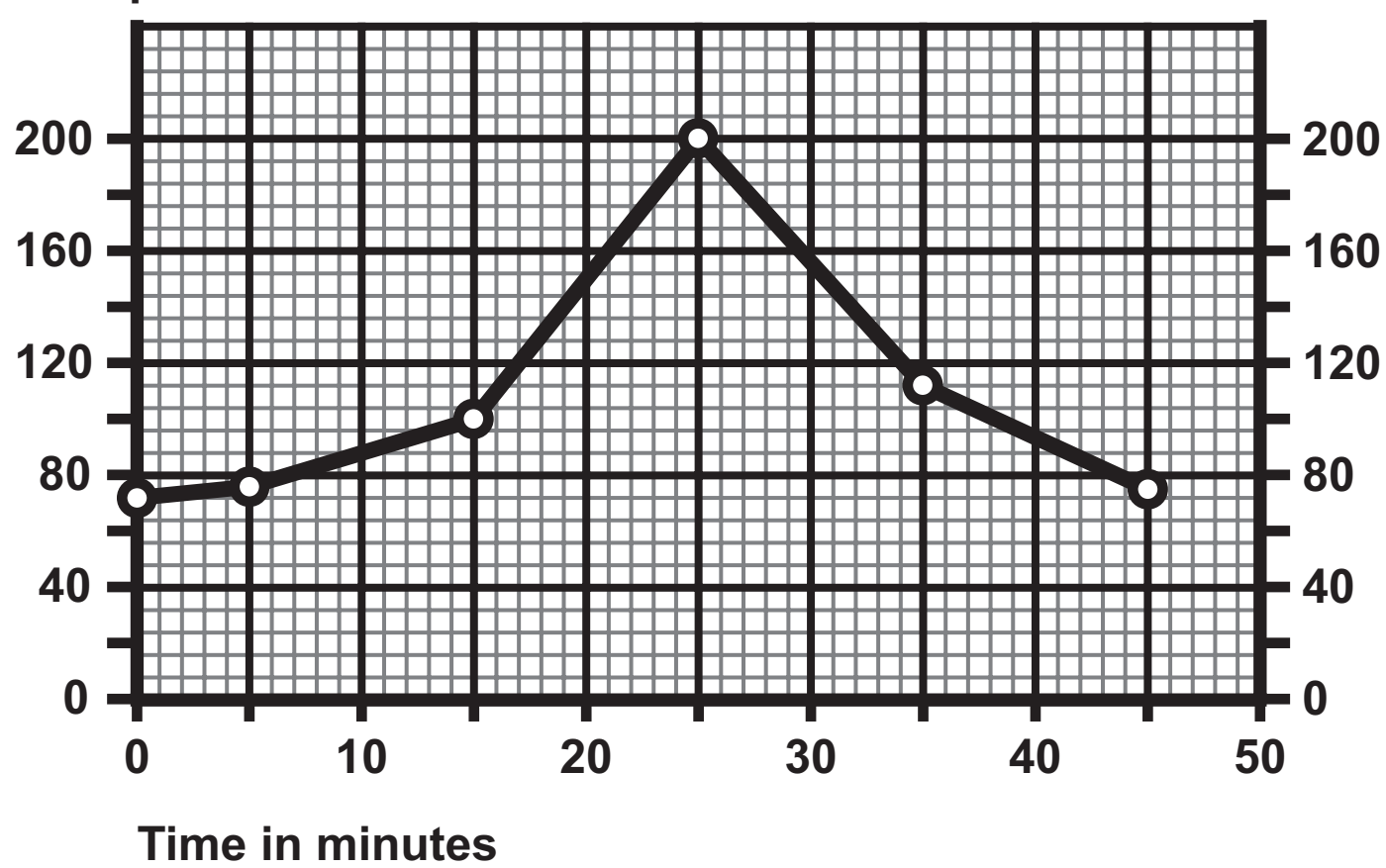
FIGURE 6



Question 4(d)

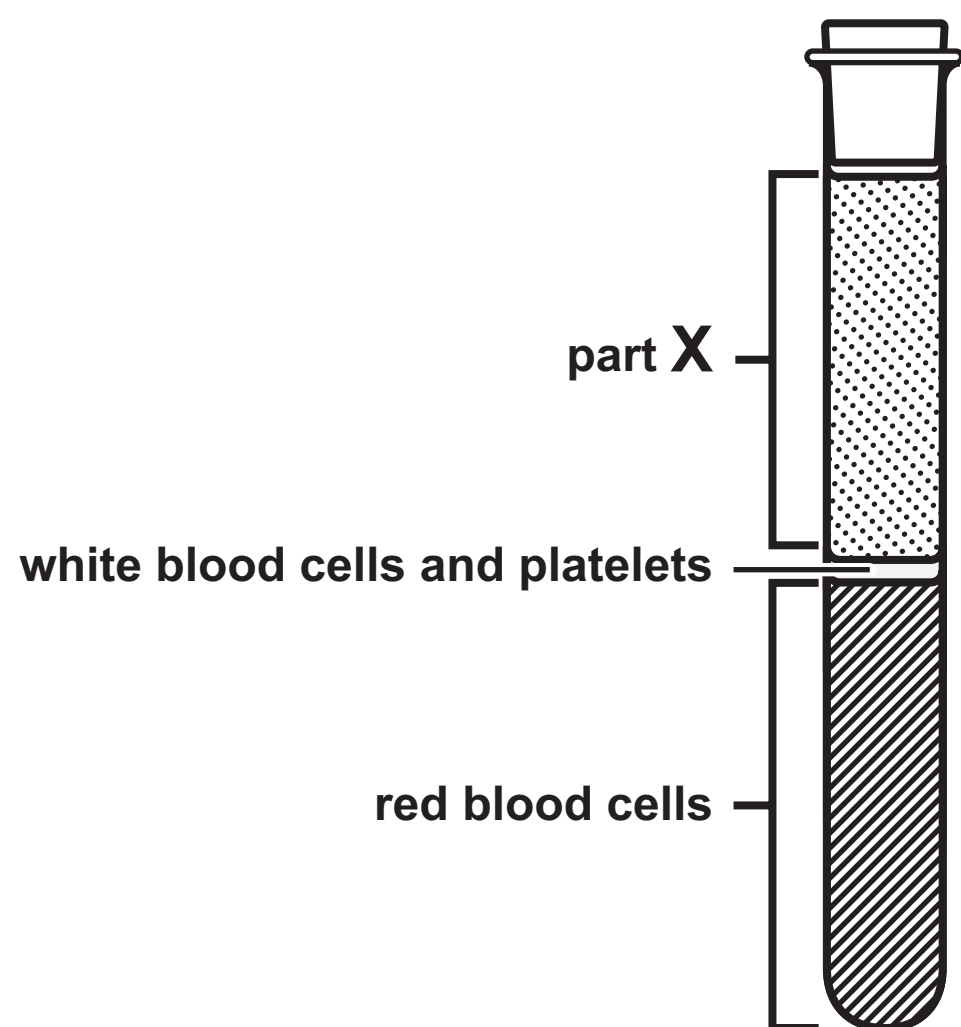
FIGURE 7

Heart rate in
beats per minute



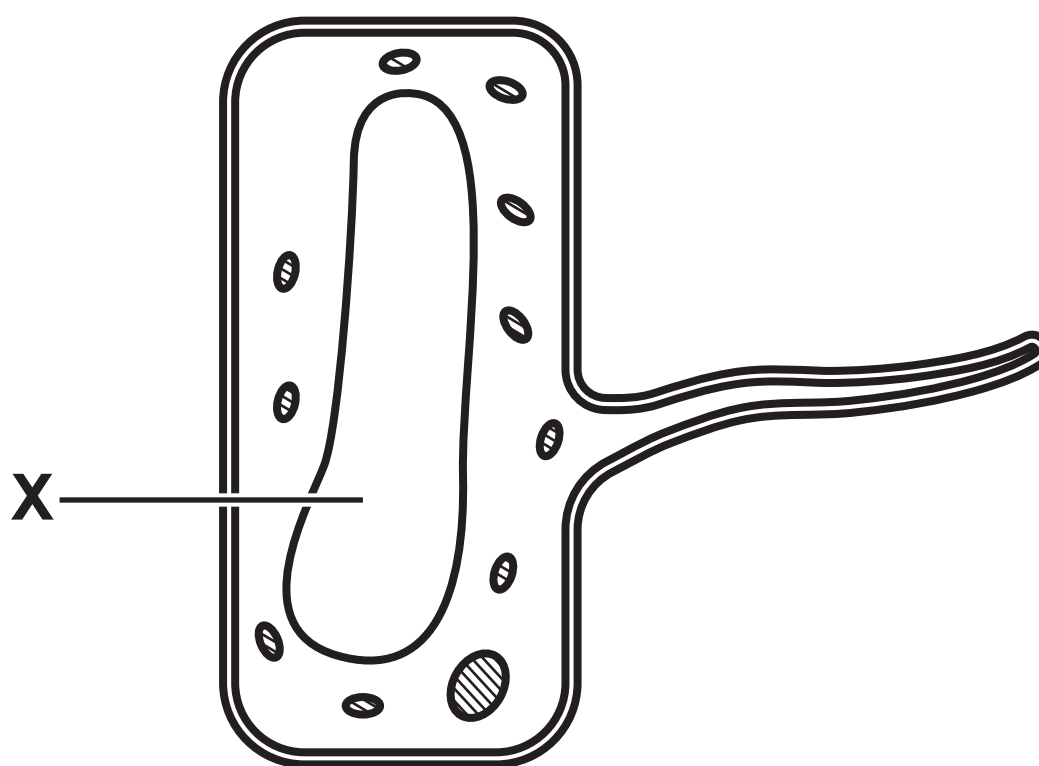
Question 5(b)

FIGURE 8



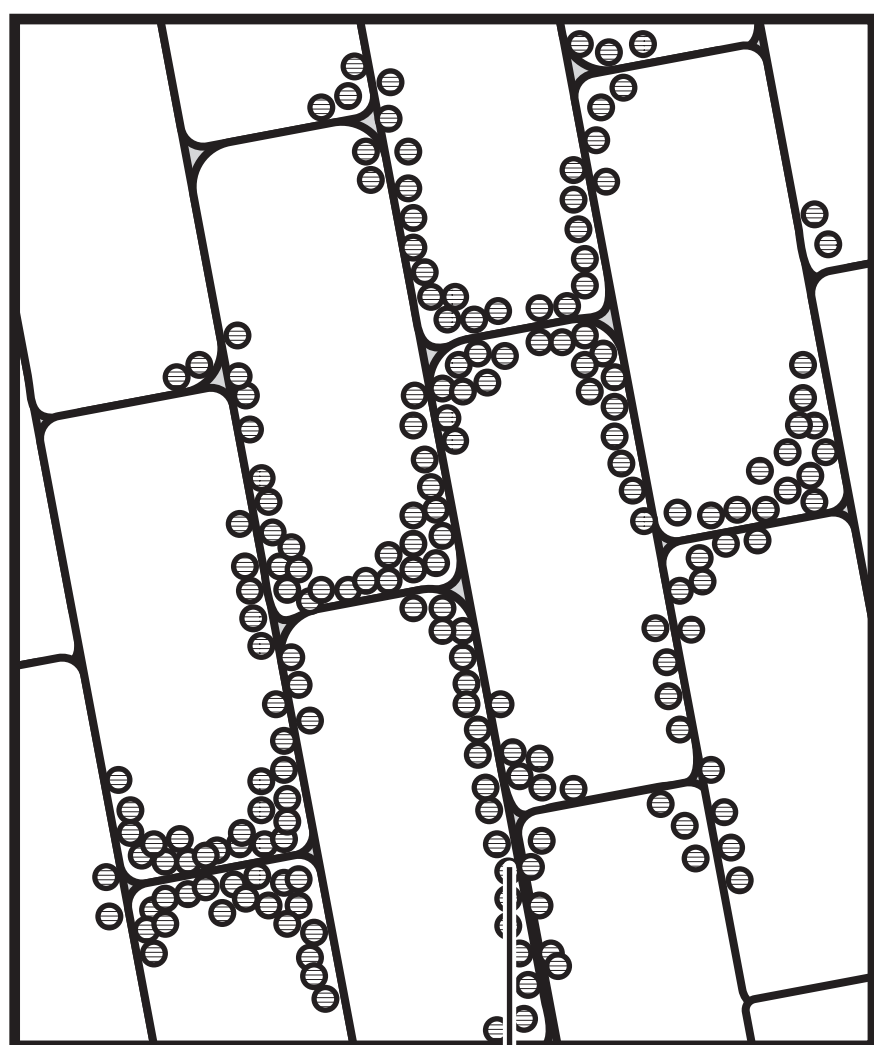
Question 6(a)

FIGURE 9

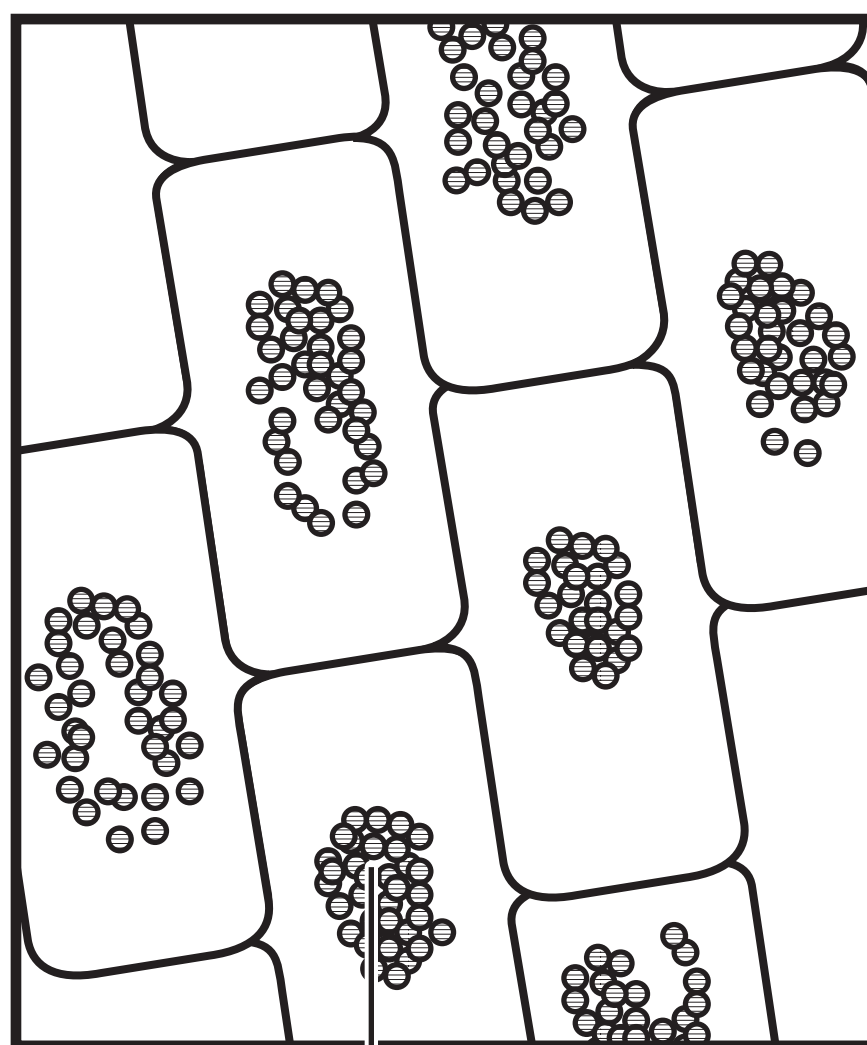


Question 6(b)

FIGURE 10

Elodea cells in tap water

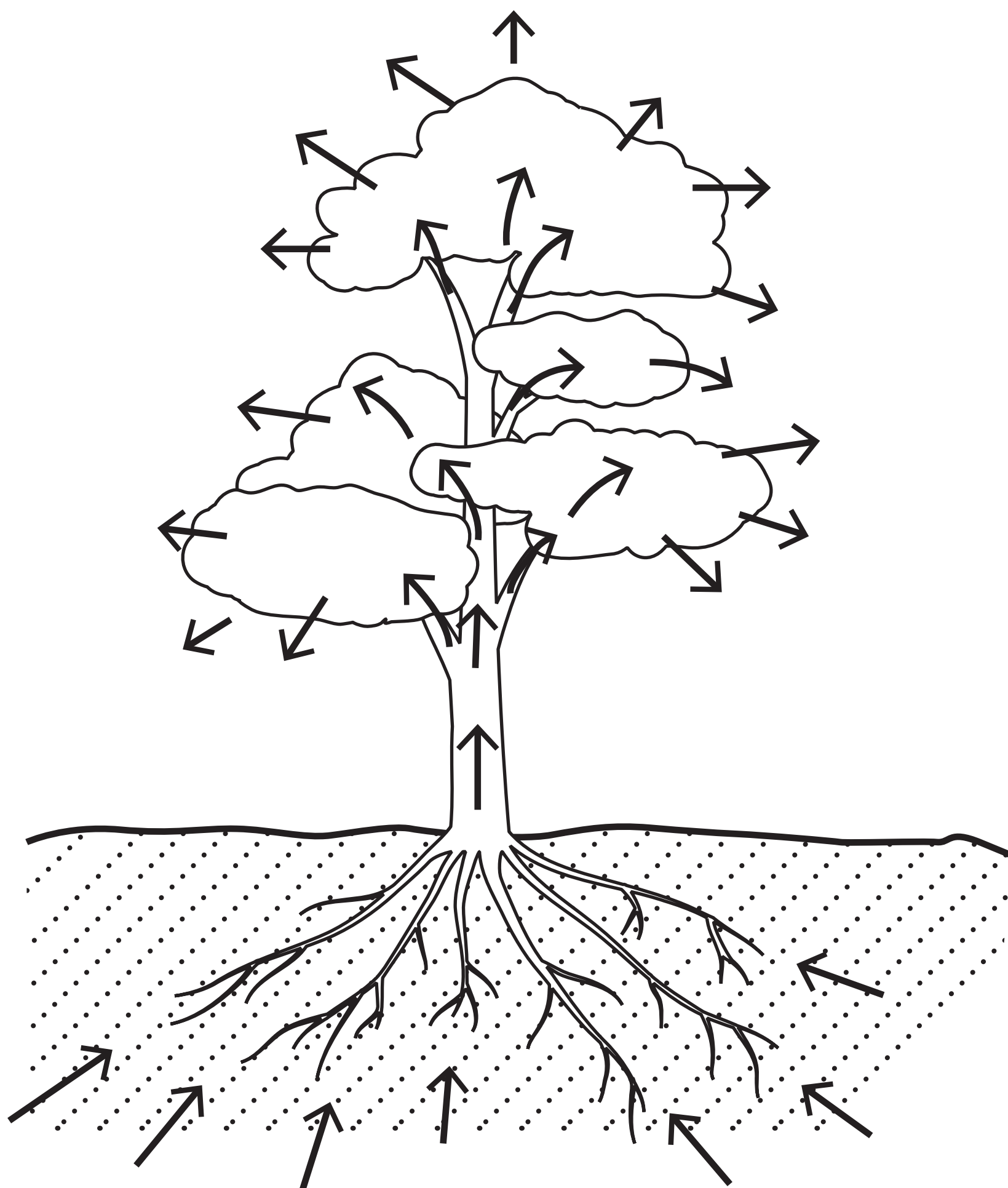
chloroplasts

Elodea cells in 10% salt solution

chloroplasts

Question 6(c)

FIGURE 11



Question 1(a)

part of microscope

function

part S ●

● to stain the cells

● to focus the image so that it is clear

● to magnify the image

part T ●

● to hold the slide in place

● to provide light to see the image

Question 3(a)

FIGURE 4

